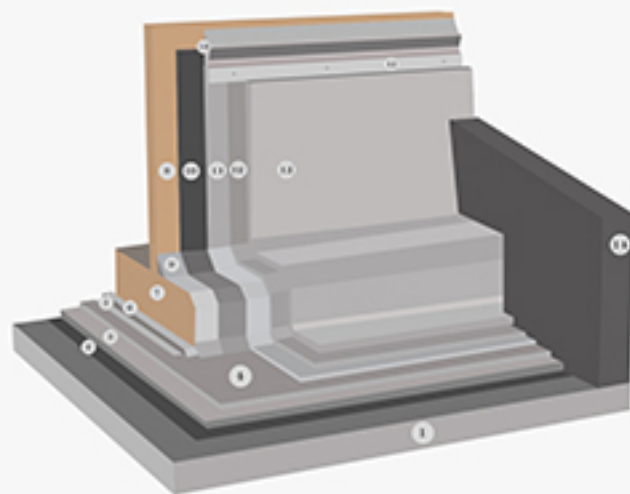


## BASEMENT WATERPROOFING SYSTEM



- |   |  |   |
|---|--|---|
| <b>1</b> Blinding Concrete  | <b>2</b> Concrete Primer   | <b>3</b> Polyflame /Premierflex 4mm<br>Black Fully Bonded (First Layer)   |
| <b>4</b> Polyflame /Premierflex 4mm<br>Black Fully Bonded (Second Layer)  | <b>5</b> PE Sheet(150 Mic)/<br>Geotextile(120 gsm)                       | <b>6</b> Protection Screed  |
| <b>7</b> Main RC Slab   | <b>8</b> Retaining Wall  | <b>9</b> Cant Strip   |
| <b>10</b> Concrete Primer   | <b>11</b> Polyflame /Premierflex 4mm<br>Black Fully Bonded (First Layer) | <b>12</b> Polyflame /Premierflex 4mm<br>Black Fully Bonded (Second Layer) |
| <b>13</b> Bituminous Protection Board<br>(Bituproof/Bituflex/Bituprotect) | <b>14</b> Back Filling   | <b>15</b> Aluminium Counter<br>Flashing                                   |
| <b>16</b> Sealant   |  |   |